



Manufactured according to OIML R60 standards

Capacity from 5000 kg to 20000 kg



- 17-4 PH STAINLESS STEEL
- HOLES FOR STANDARD SHACKLES
- COMBINED ERROR $\leq \pm 0.03\%$
- PROTECTION CLASS IP68

CAPACITY	kg			ERC	NET WEIGHT OF LOAD CELL (kg)	CODE
5000		•	•	•	4.5	TAL5000
10000		•	•	•	4.6	TAL10000
20000		•	•	•	6.6	TAL20000
		 ON REQUEST				

CERTIFICATIONS

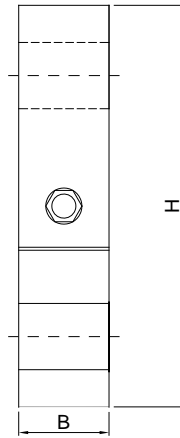
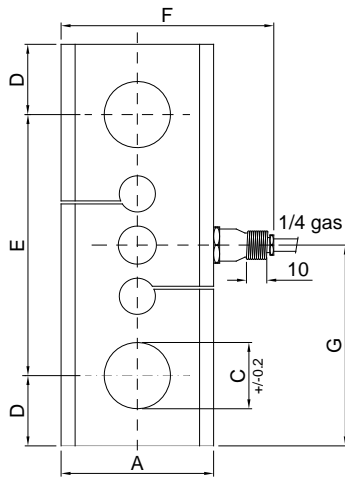
CERTIFICATIONS ON REQUEST

	Calibration report (ACCREDIA LAT traceability)
	ATEX II 1GD (zone 0-1-2-20-21-22)
	IECEx (zone 0-1-2-20-21-22)
	Complies with the Eurasian Custom Union regulations (Russia, Belarus, Kazakhstan)

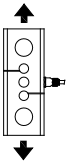
OPTIONS ON REQUEST

	DESCRIPTION
	Two redundant strain gauges Wheatstone bridges (350 Ω) with two output cables; for dual safety systems

DIMENSIONS (mm)



	kg 5000 kg 10000	kg 20000
A	76	82
B	45	54
C	33	52
D	35	47
E	130	166
F	106	112
G	100	130
H	200	260

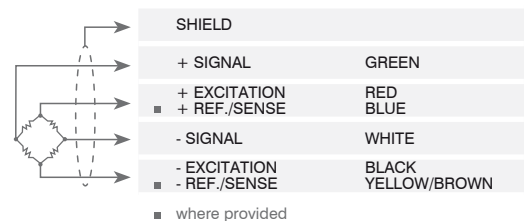


TECHNICAL FEATURES

Material	AISI 420 stainless steel		
Nominal load (E max)	5000 - 10000 - 20000 kg		
Combined error	≤ ±0.03%		
Protection class	IP68		
Rated output	2 mV/V ±0.1%	Input resistance	350 Ω ±5
Temperature effect on zero	0.005% °C	Output resistance	350 Ω ±5
Temperature effect on span	0.003% °C	Zero balance	±1%
Compensated temperature range	-10 °C / +50 °C	Insulation resistance	>5000 MΩ
Operating temperature range	-20 °C / +70 °C	Safe overload (% of full scale)	150%
Creep at nominal load in 30 minutes	0.03%	Ultimate overload (% of full scale)	300%
Max supply voltage without damage	15 V	Deflection at nominal load	0.3 mm

ELECTRICAL CONNECTIONS

Cable length	10 m
Cable diameter	5 mm
Cores	4 x 0.25 mm ² /6 x 0.14 mm ²



The Company reserves the right to make changes to the technical data, drawings and images without notice.